

Maria Natália Dias Soeiro Cordeiro

- Departamento de Química e Bioquímica - FCUP
- Professora de Química
- Áreas de investigação:

Química Teórica / Química Física

Medicina / Química Farmacéutica (métodos estatísticos)



→ **Conhecimento:**
(1998)



! Ufa...

→ **Inscrição:** <https://cordis.europa.eu/>
(Submeter CV e aguardar)

→ **Contacto CE:**
(2000)



e



E sim, é um serviço remunerado !



Fui seleccionada para avaliar (2002 - presente)

Research Infrastructures
RTNs, ITNs, EIDs & IDPs
small-NMPs
PEOPLE

PEOPLE

- **IEF:** Aims to support the career development, or reinforce, of ERs at different stages of their careers (*independence*)
- **IOF:** Aims to reinforce the international dimension of the career of EU researchers by giving them the opportunity to be trained in a high-level organisation - 3rd country
- **IIF:** Aims to reinforce the scientific excellence of EU and AC (incoming top-class ERs - 3rd country)





EUROPEAN
COMMISSION

Community research

PEOPLE

- **IEF:** minimum 12 months / maximum 24 months.

- **IOF:** minimum 12 months / maximum 36 months.

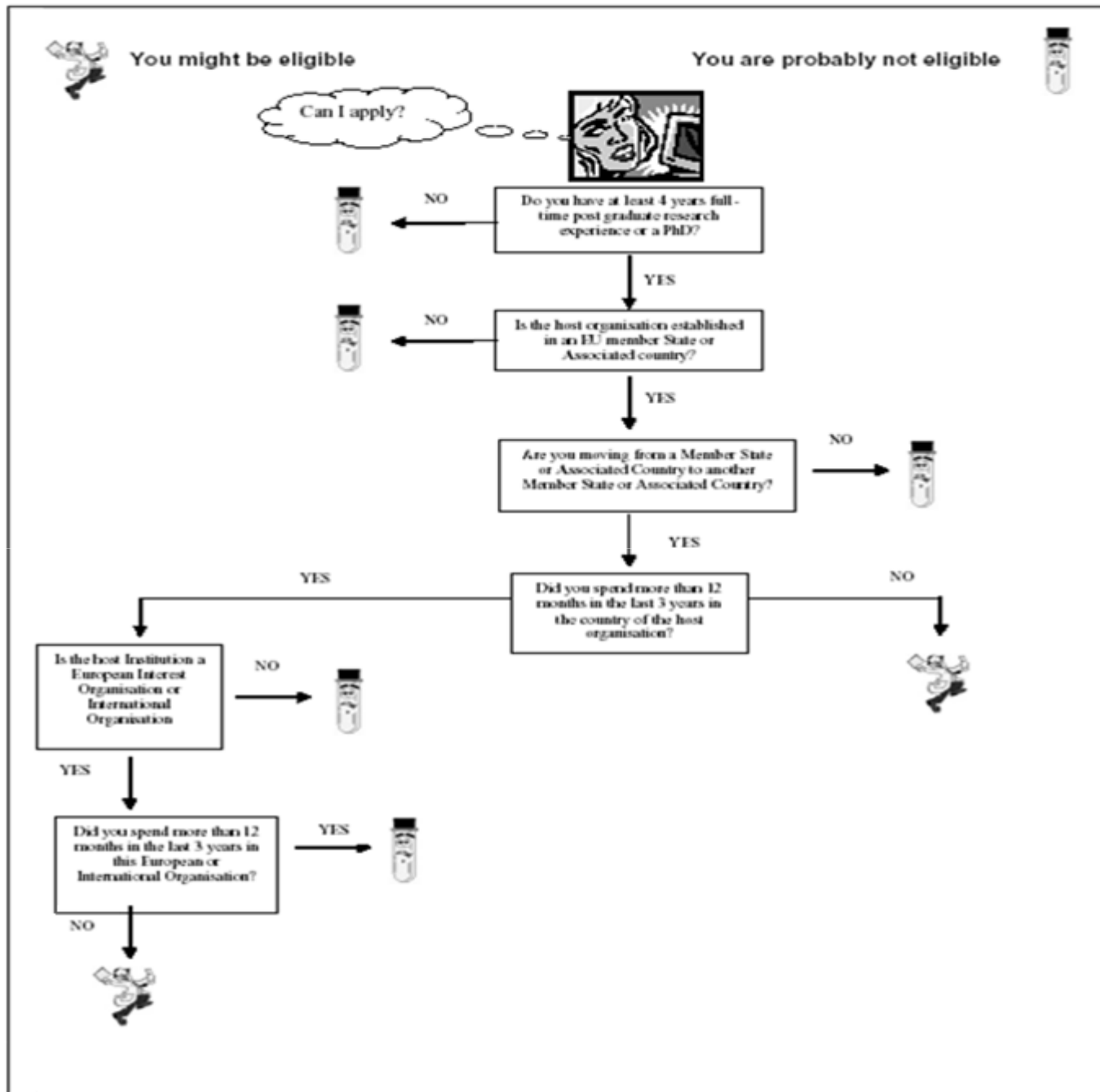
(outgoing phase: 12-24; *mandatory* reintegration phase: 12)

- **IIF:** minimum 12 months / maximum 36 months.

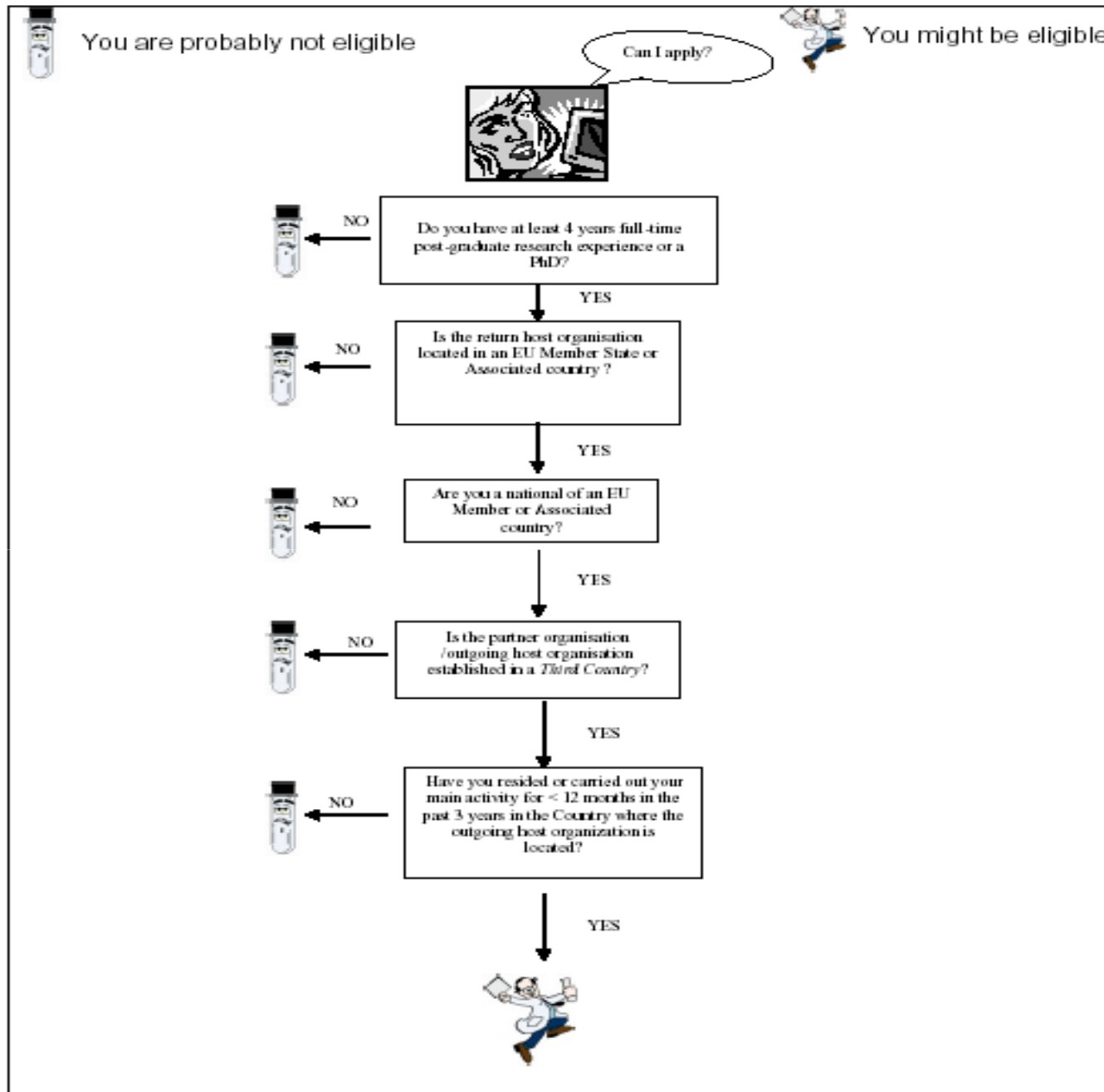
(incoming phase: 12-24; *possible* returning phase: 12)



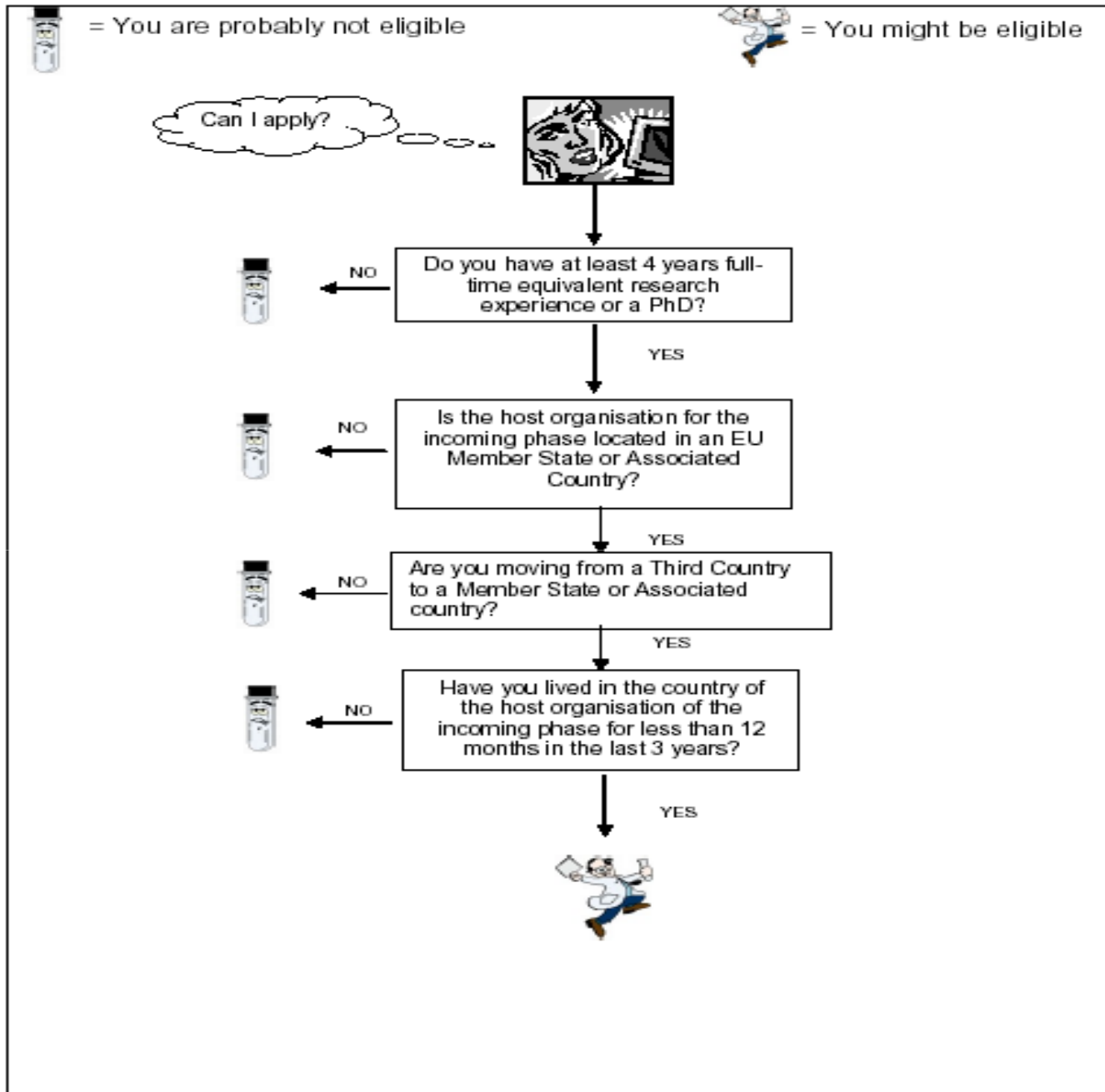
IEF





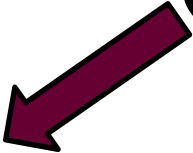
IOF



IIF



8 parallel thematic sub-panels (Science areas)

- **Social and Human Sciences (SOC)**
- **Economic Sciences (ECO)**
- **Information Science and Engineering (ENG)** 
- **Mathematics (MAT)**
- **Life Sciences (LIF)** 
- **Environmental and Geo-Sciences (ENV)**
- **Physics (PHY)**  (50 IEF + 35 IIF + 10 IOF)
- **Chemistry (CHE)**

Main aims of the PEOPLE fellowships under FP6/FP7

- Marie Curie individual fellowships are actions aimed at individual and experienced researchers (ERs) to carry out a period of **research mobility, advance training, career development & transfer of knowledge (IOF+IIF)**
- The paramount consideration is one of **“mobility”** !
Mobility is generally considered to be **very positive** for the development of a scientist and as such, **a central plank** to Marie Curie funding !



Evaluation Criteria

- All FP7 proposals assessed according to 5 criteria:
 - **S & T quality**
 - **Training (IEF & IOF) / Transfer of Knowledge (IIF)**
 - **Researcher**
 - **Implementation**
 - **Impact**
- Evaluation scores awarded for each of the 5 criteria.
- Each criterion scored out of five, but half marks might be given. The scores:
 - **0 - the proposal fails to address the criterion**
 - **1 - very poor**
 - **2 – poor**
 - **3 – fair**
 - **4 – very good**
 - **5 – excellent**



Evaluation Criteria


Please notice, that thresholds are set:

→ **3 to 4** for each individual criterion

→ **70%** for the sum of individual scores

IEF
IOF

Evaluation Criterion	Weighting (in %)	Threshold
S&T Quality	25	3
Training	15	3
Researcher	25	4
Implementation	15 ^a	N/A
Impact	20	3.5



IIF

Evaluation Criterion	Weighting (in %)	Threshold
S&T Quality	25	3
Transfer of Knowledge	15	N/A
Researcher	25	4
Implementation	15	N/A
Impact	20	3.5



Proposals that fail to achieve one of these thresholds scores → rejected !



Evaluation Criteria

- **S &T Quality**

- Research/technological quality, including any interdisciplinarity
- Appropriateness of the methodology and approach
- Originality and innovative nature of the project (*state of the art*)
- Timeliness and relevance of the project
- Host research expertise in the field
- Quality of the group/supervisors (**IOF: *out & return hosts***)

- **Training**

- Clarity and quality of the research training objectives for the researcher
- Relevance and quality of additional research training, and transferable skills offered (**IEF: *exposure to industry***)
- Host expertise in training in the field and capacity to provide mentoring/tutoring (**IOF: *out & return hosts***)





Evaluation Criteria

- **Researcher**

- Research experience
- Research results including patents, publications, teaching, ...
- Independent thinking and leadership qualities (**IIF: + *capacity ToK***)
- Match between the fellow's profile and project
- Potential for reaching a position of professional maturity (**IEF+IOF**)
- Potential to acquire new knowledge (**IEF+IOF**)

- **Transfer of Knowledge (IIF)**

- Potential of transferring knowledge to the EU host or to EU
- Clarity and quality of the transfer of knowledge objectives





Evaluation Criteria

- **Implementation**

- Quality of infrastructure and International collaborations of host(s)
- Practical arrangements for the implementation and management
- Feasibility and credibility of the project (*plus work plan & IPs*)
- Practical and administrative arrangements, and support for the hosting of the fellow (*IOF: out & return hosts*)

- **Impact**

- Potential of acquiring competencies during the fellowship to gather a position of professional maturity, diversity and independence, including complementary skills (*IEF: exposure to industry*)
- Potential for beneficial co-operation among hosts (*IIF+IOF*)
- Contribution to career development or re-establishment (*IIF: no*)
- Contribution to EU excellence and competitiveness
- Benefit of the mobility to the ERA
- Impact of the proposed outreach activities

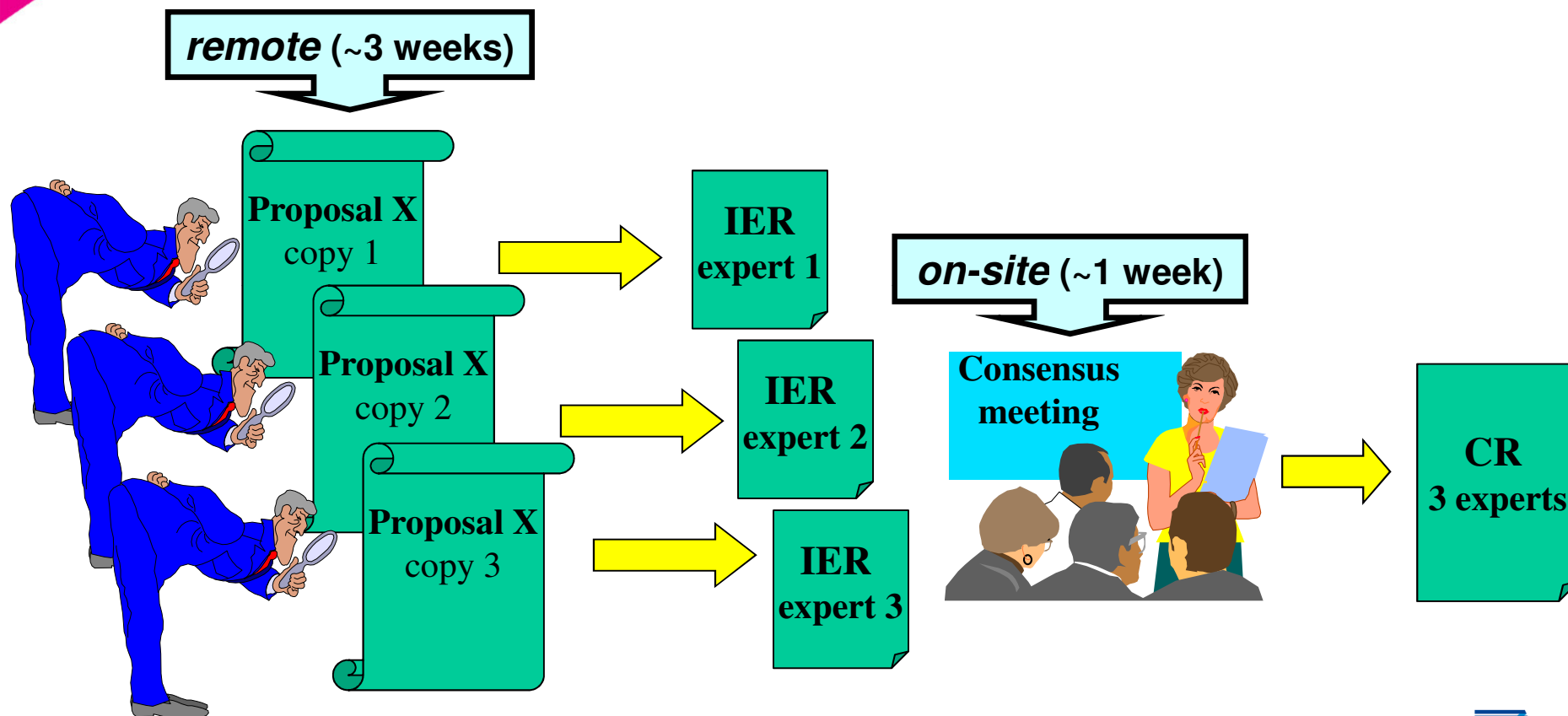




EUROPEAN
COMMISSION

Community research

Overview on the evaluation process



IER=Individual evaluation report

CR=Consensus Report





EUROPEAN
COMMISSION

Community research

Must

- **IEF:** (Very competitive; ~ 10%; > 90% !)
→ Advance training, career development & trans-national mobility
- **IOF:** (Less competitive; ~ 10% ; > 85%)
→ Advanced training and international mobility (outgoing phase)
and transfer of knowledge (return phase)
- **IIF:** (+ or – competitive; ~ 10% ; > 88%)
→ Knowledge sharing and research cooperation
If active in an ICPC, may include a return phase
(Mutual interest between the EU/AC and 3rd country)

Hints:

- **Strong Hosts and Researchers**

CHE (Hosts: ~ 30 UK; 20 DE; 10 FR; 10 IT; 10 SW; few SP, SE, BE, NL)
(Researchers IEF: ~ 20 IT; 10 SP; 5 DE; few PL, GR, FR, PT)
(Researchers IIF: ~ 15 IN; 5 CN; few RU, CA, USA)
(Hosts/Researchers IOF: ~ US + CA / ~ 5 FR; few IT, GR, SP, CZ, IS)

- **Training & Quality → Research/Soft skills**

- **Co-operation (foster or new)**

¿ **Experiência positiva/benéfica** ? **SIM!**

Obrigada pela vossa atenção

